



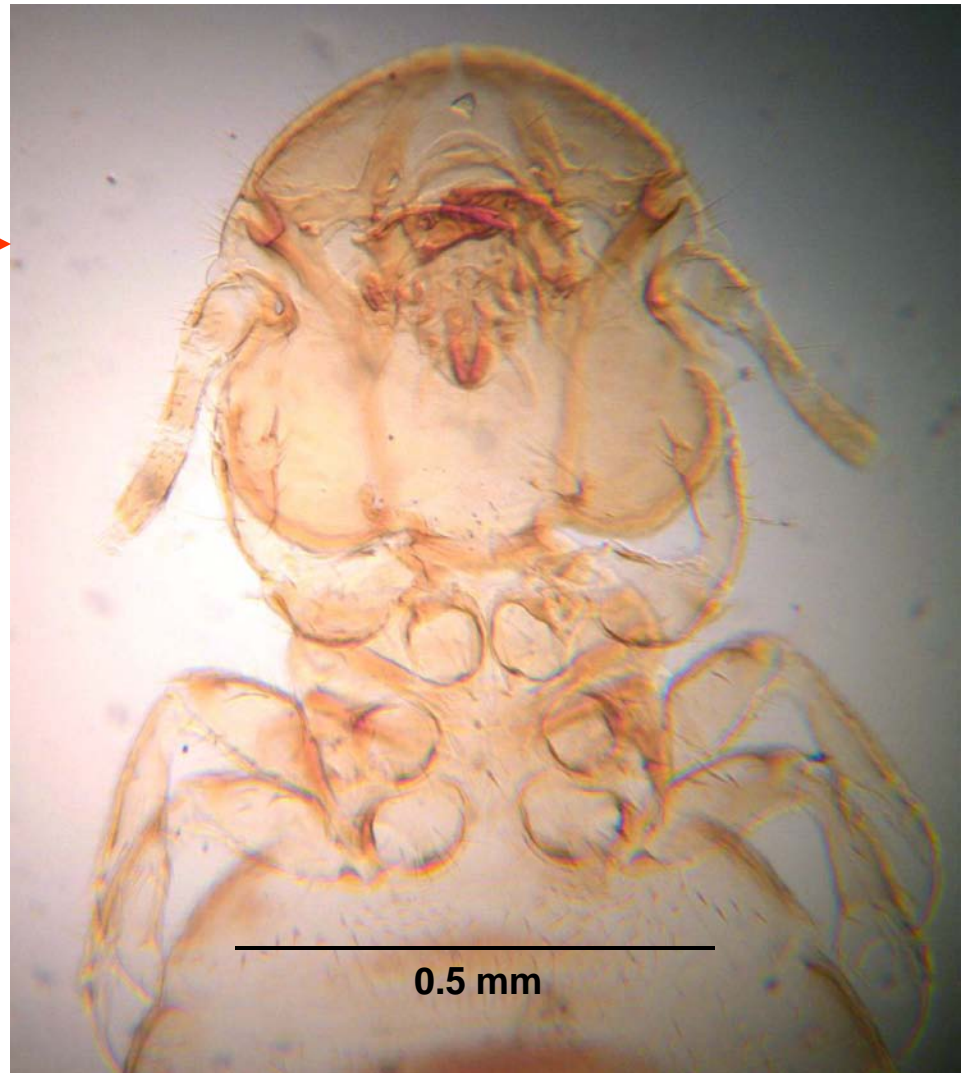
Bovicola equi, female, entire.

Note: materials on this PowerPoint are from specimens prepared by R. C. Dagleish (Cornell University). Dr. Dagleish made this material available to Marshall University while he was serving as the Director of Research, West Virginia School of Osteopathic Medicine, Lewisburg, WV.

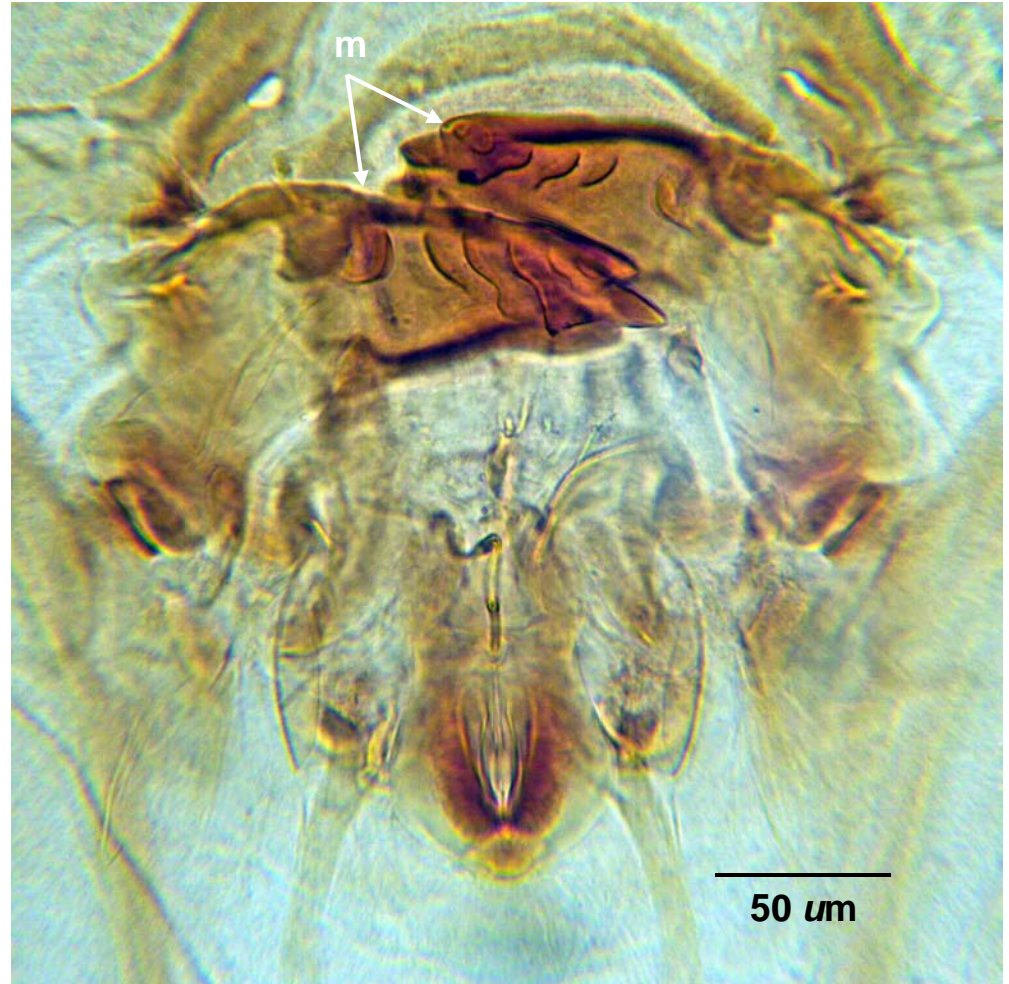
Bovicola equi, female, gonopods (g).



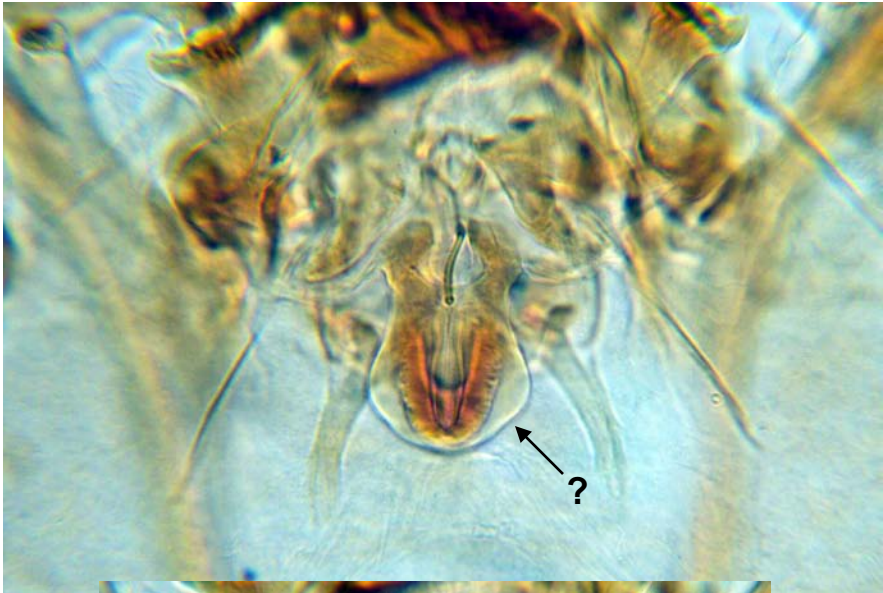
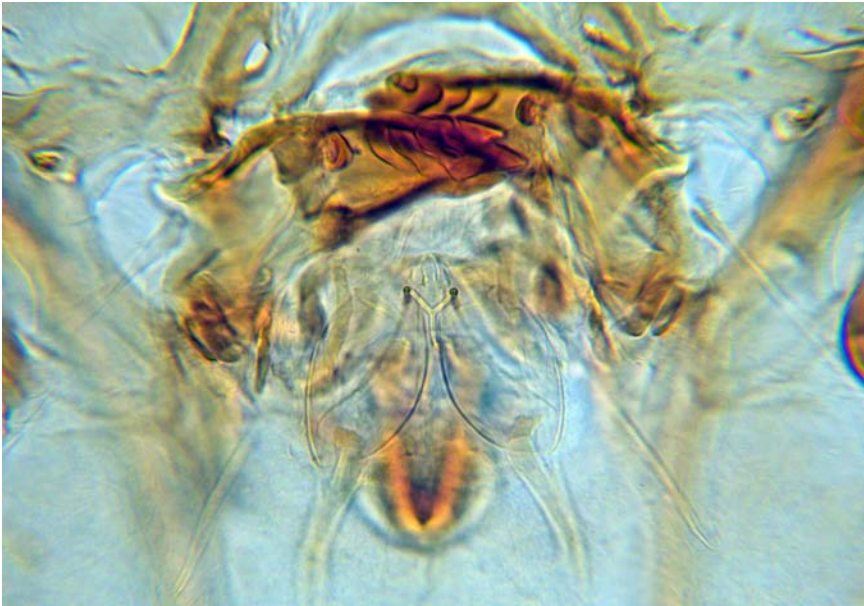
Bovicola equi, female, head & thorax.



Bovicola equi, female, head. Box in A highlights mandibles (m) in B.



B. equi; mandibles and associated feeding structures
(four depths of fields).



B. equi, female, paratergal plates (inner edge indicated by dashed arrows, outer edge by solid arrows). Legend: s, spiracle; t, trachea.

